

HYDROSTATIC STEERING UNIT TYPE HKUQ.../4



HKUQ.../4 is a new series of hydrostatic steering units with an additionally increased flow. The hydrostatic steering unit type HKUQ.../4 is available for steering medium and large sized vehicles, allowing easy control either in servo-amplified mode or in emergency operation.

HKUQ.../4 is an "Open Center-Non Load Reaction" hydrostatic steering in which restrictor for amplifying factor from 1,3 to 2,5 is built-in.

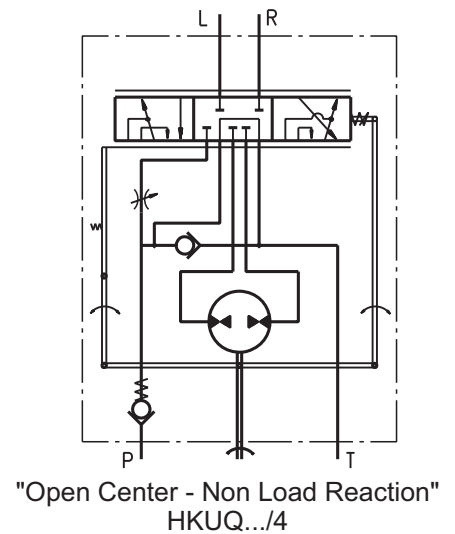
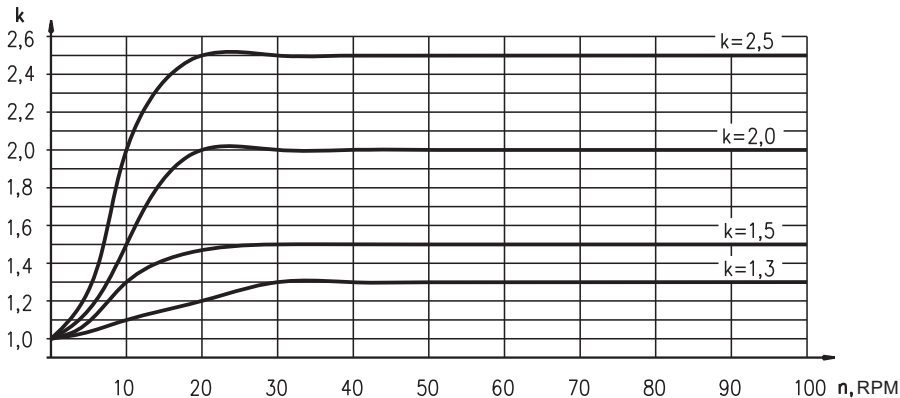
In accordance with the size of the gear wheel set and amplifying factor, HKUQ...4 has the following working volume:

- from 80 cm³ to 200 cm³ for emergency operation mode (manual steering without servo-amplifying);

- from 100 cm³ to 500 cm³ for normal operation mode (with total flow amplifying).

There is no servo-amplifying of flow if low steering speed up to 10 RPM is applied. In steering speed increase over 20 RPM there is total servo-amplifying of flow. In this mode gear wheel set flow and restrictor flow are added.

VARIABLE AMPLIFYING FACTOR

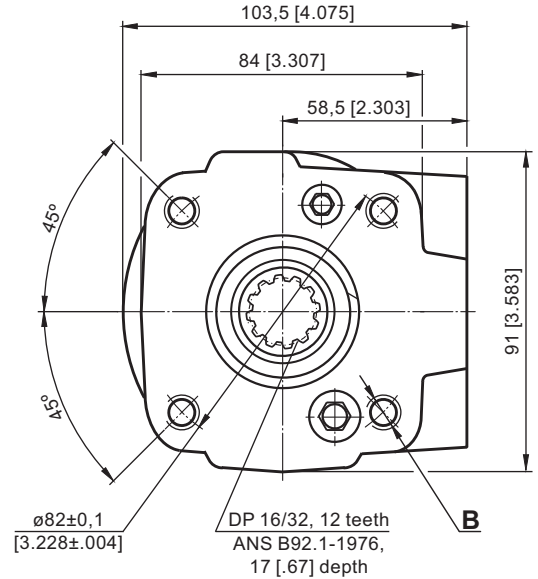
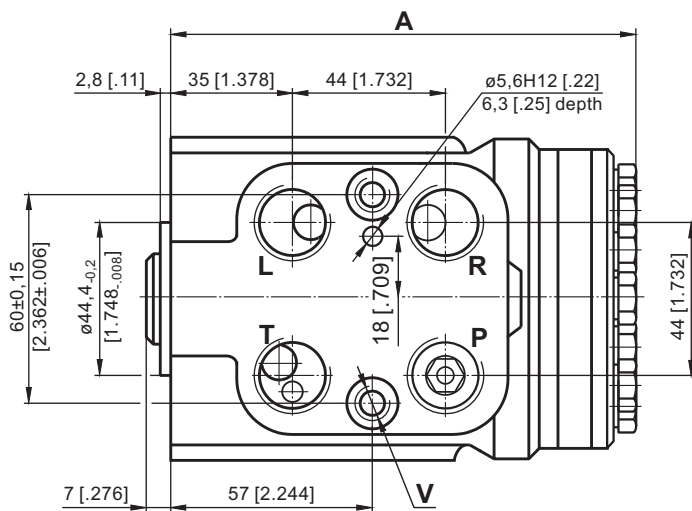


SPECIFICATION DATA

Parameters	Type																			
	HKUQ 80/.../4				HKUQ 100/.../4				HKUQ 124/.../4				HKUQ 160/.../4				HKUQ 200/.../4			
Displacement - w/o servo-amplifying (in emergency mode)	79,2 [4.83]				99,0 [6.04]				123,8 [7.56]				158,4 [9.67]				198 [12.08]			
- with servo-amplifying cm ³ /rev [in ³ /rev]	100 [2.64]	125 [7.62]	160 [9.76]	200 [12.2]	125 [7.62]	160 [9.76]	200 [12.2]	250 [15.25]	160 [9.76]	200 [12.2]	250 [15.25]	320 [19.52]	200 [12.2]	250 [15.25]	320 [19.52]	400 [24.4]	250 [15.25]	320 [19.52]	400 [24.4]	500 [30.5]
Rated Flow* lpm [GPM]	10 [2.64]	12,5 [3.30]	16 [4.22]	20 [5.28]	12,5 [3.30]	16 [4.22]	20 [5.28]	25 [6.60]	16 [4.22]	20 [5.28]	25 [6.60]	32 [8.45]	20 [5.28]	25 [6.60]	32 [8.45]	40 [10.57]	25 [6.60]	32 [8.45]	40 [10.57]	50 [13.21]
Amplifying Factor (at shaft revolution over 20 min)	1,3	1,5	2,0	2,5	1,3	1,5	2,0	2,5	1,3	1,5	2,0	2,5	1,3	1,5	2,0	2,5	1,3	1,5	2,0	2,5
Rated Pressure bar [PSI]	170 [2465]																			
Max. Cont. Pressure in Line T bar [PSI]	25 [363]																			
Max. Torque at Servoamplifying Nm [lb-in]	3 [26]																			
Max. Torque w/o Servoamplifying Nm [lb-in]	120 [1065]																			
Weight, avg. kg [lb]	5,6 [12.4]				5,7 [12.6]				5,8 [12.8]				6,0 [13.2]				6,3 [13.9]			
Dimension A mm [in]	136,2 [5.36]				138,8 [5.47]				142,2 [5.60]				146,8 [5.78]				152,2 [5.99]			

* Rated Flow at 100 RPM.

DIMENSIONS AND MOUNTING DATA



Code	Ports - *P, T, R, L Thread	Column Mounting Thread - B	Valve Mounting Thread - V
-	G1/2 15 mm [.59 in] depth	4 x M10 18 mm [.71 in] depth	2 x M10x1 16 mm [.63 in] depth
M	M22x1,5 15 mm [.59 in] depth	4 x M10 18 mm [.71 in] depth	2 x M10x1 16 mm [.63 in] depth
A	3/4 - 16 UNF O-ring 15 mm [.59 in] depth	4 x 3/8 - 16 UNC 15,7 mm [.62 in] depth	2 x 3/8 - 24 UNC 14,2 mm [.56 in] depth

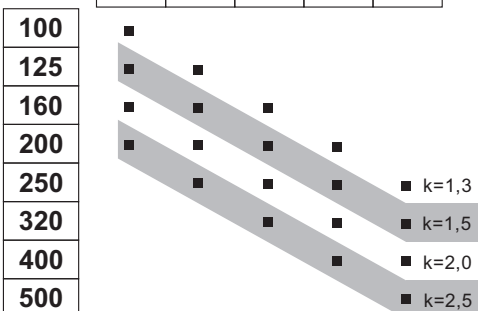
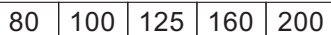
ORDER CODE for HKUQ...



Pos.1 - Displacement code

- 80 - 79,2 cm³/rev [4.83 in³/rev]
- 100 - 99,0 cm³/rev [6.04 in³/rev]
- 125 - 123,8 cm³/rev [7.56 in³/rev]
- 160 - 158,4 cm³/rev [9.67 in³/rev]
- 200 - 198,4 cm³/rev [12.10 in³/rev]

Pos.2 - Displacement with amplifying factor 1,3; 1,5; 2,0 or 2,5



Pos.3 - Versions

- 4 - Version 4 "Open Center - Non Load Reaction"

Pos.4 - Ports

- omit - BSPP (ISO 228)
- A - SAE (ANSI B 1.1 - 1982)
- M - Metric (ISO 262)

Pos.5 - Option (Paint*)

- omit - No Paint
- P - Painted
- PC - Corrosion Protected Paint
- PS - Special Paint**
- PCS - Special Corrosion Protected Paint**

Pos.6 - Design Series

- omit - Factory specified

NOTES:

- * Exemplary designation of steering unit with displacement 200 cm³ and amplifying factor 2,5: HKUQ 200/500/4
- ** Colour at customer's request.
- *** Non painted feeding surfaces, colour at customer's request.

The steering units are mangano-phosphatized as standard.